

AIR2MINI SET

AIR2MINI SET, LED Reader 7, 0923 Lock, PS 12W

Article Number: MI-SET1-AIR-0923-01E+MINI7

Ultra compact FURNITURE ACCESS Controller with External Reader, supporting the full range of convenience and security features.

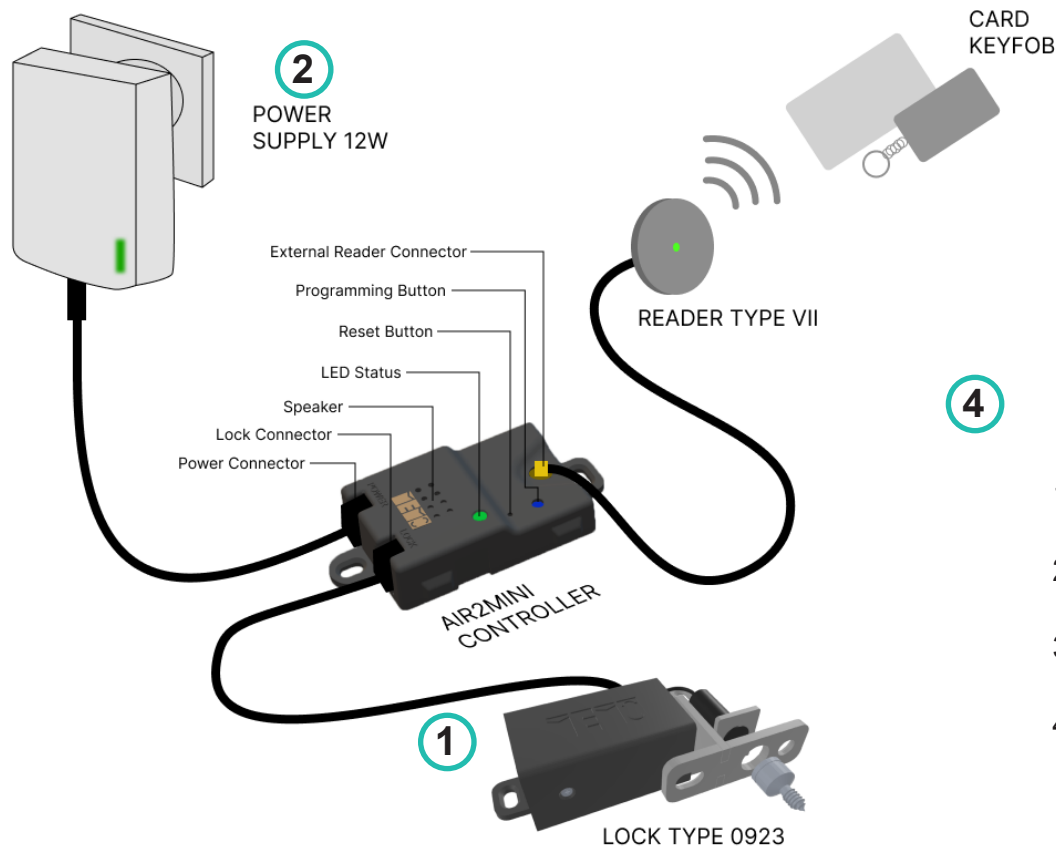
This SET contains all components, required to secure one door or drawer with a compact and high resistance magnetic lock type.

The External Reader allows flexible placement, and the Power Supply fulfils worldwide safety standards.

APP control and flexible key-management are included, a wide range of security features are optional available on subscription base.

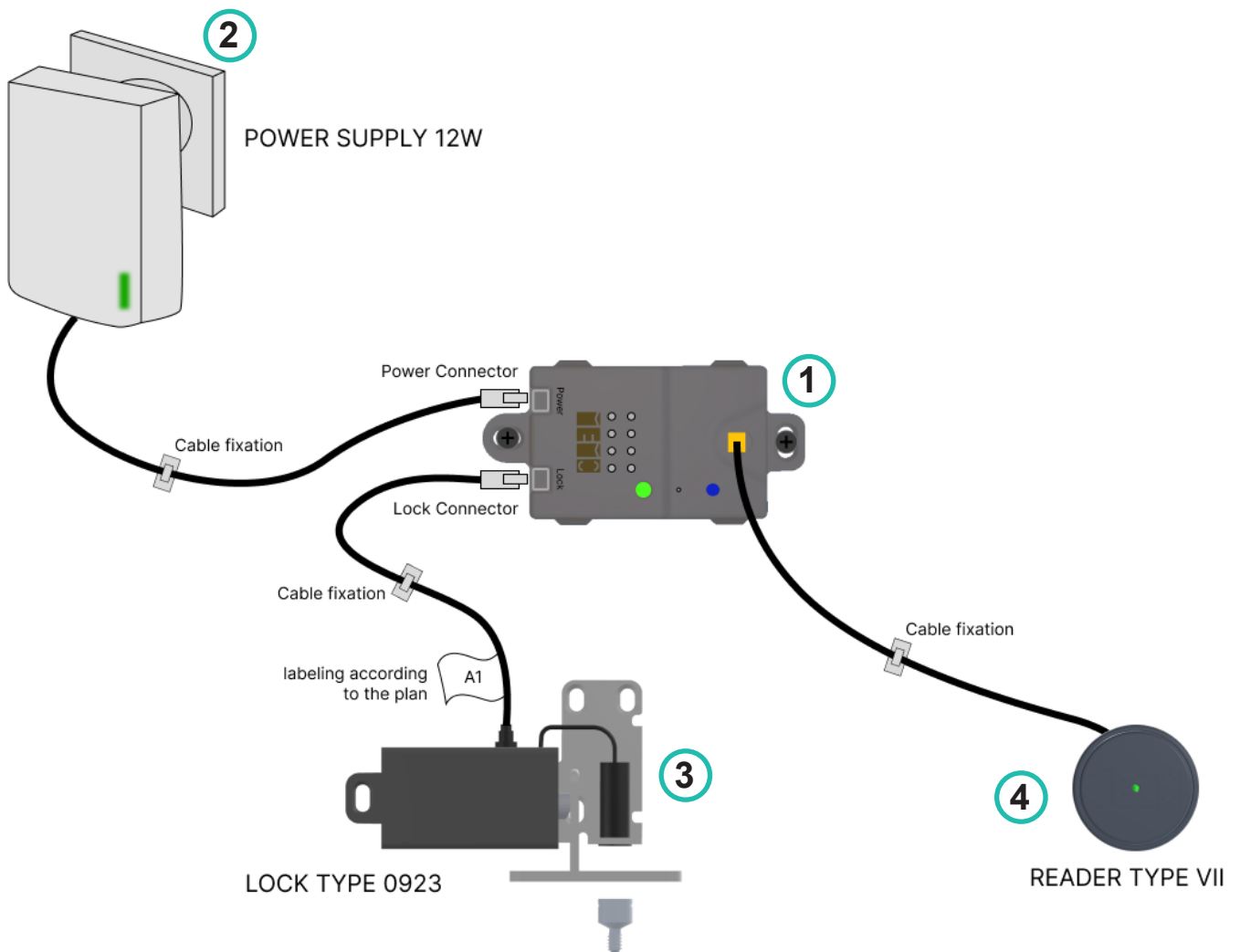


- 1 - AIR2MINI
- 2 - Reader VII
- 3 - Lock 0923
- 4 - Power Supply 12w



- 1. AIR2MINI
- 2. Power Supply WW 12W
- 3. Magnetic Lock 0923
- 4. External Reader Type VII

AIR2MINI SET - Connections



1. AIR2MINI
2. Power Supply WW 12W
3. Magnetic Lock 0923
4. External Reader Type VII

Air2Mini External Reader

Furniture Access & Security Controller

Article Number:MI-CON-0001-AIRMIN

FURNITURE ACCESS Controller with external reader - ultra compact size allows mounting directly behind the furniture front panel. The device provides acoustic and visual status information and simple connectivity by labelled connectors for the lock and power supply.



Connectivity to one lock, supporting the full range of MEMOs furniture lock types and external readers.

Optional:

- A wide range of SECURITY FEATURES configurable via mobile APP(Android or iOS).
- BLUETOOTH mesh for wireless network.
- WIFI settings to benefit from the optional MAINTENANCE & STATISTICS package.

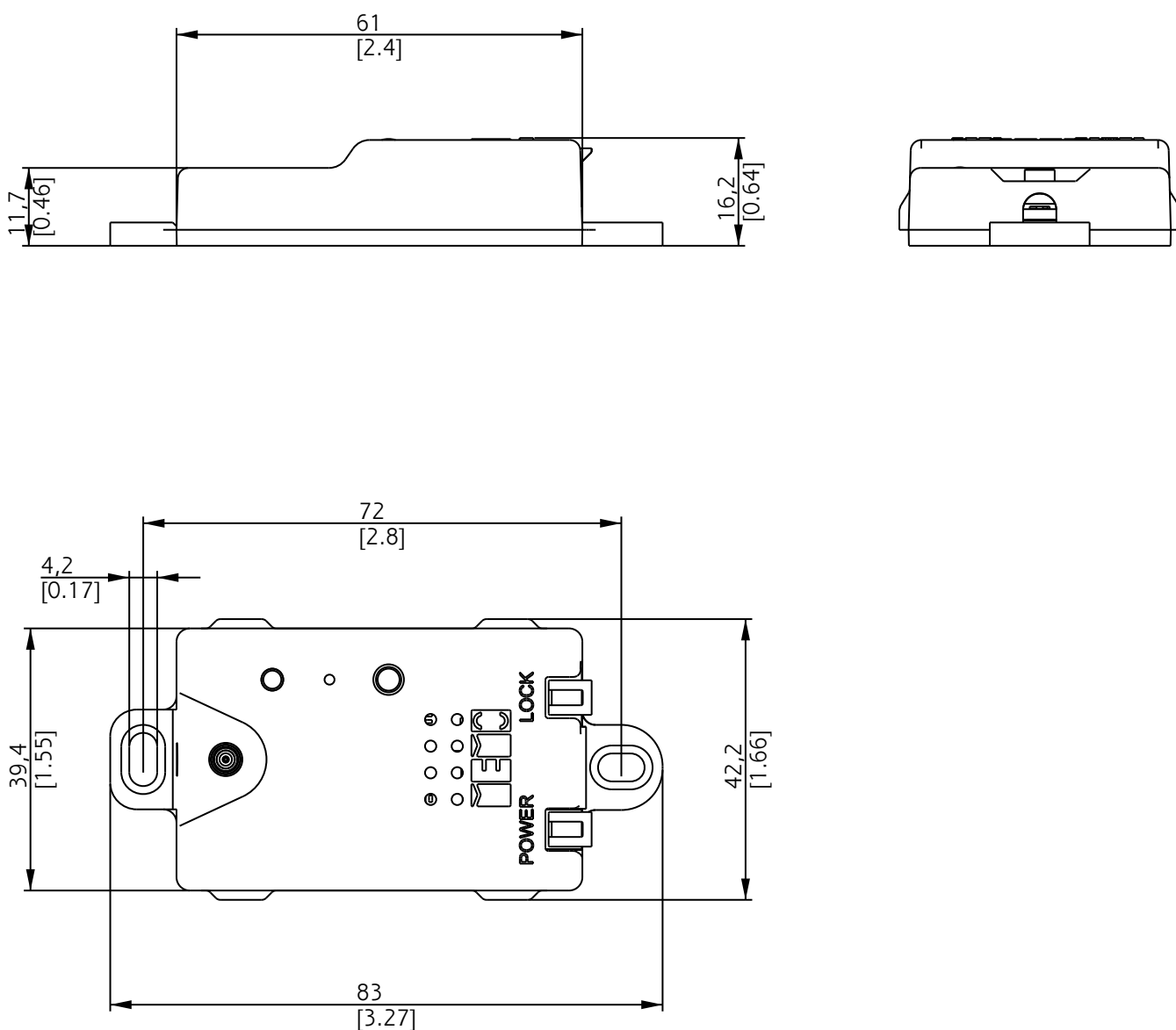
Technical Data

Dimension	83 x 42.2 x 16.2 (mm) / 3.27 x 1.66 x 0.64 (inch)
Input Voltage	12 V CC $\pm 10\%$ (External Power Supply)
Power Dissipation	Typical 4W, Maximum 10W
Temperature Range	10°C – 50°C
Protection Rating	IP20
Controlled Outputs	1 (1 volt-free contact + 1 load driver parallel per outputs)
Volt-Free Contact Maximum Voltage	24V
Volt-Free Contact Maximum Current	20mA
Load Driver Output Voltage	Power Supply voltage (Fuse Protected 1.1A)
Alarm Sensor Inputs	1

Features

Overvoltage Protection	YES
Over current Protection	YES
Audio Feedback	Onboard 8 Ohm Speaker
Visual Indicator	1 x RGB LED (Top)
Network Functions	Secured BLE MESH between nodes
Configuration and Management	Android or iOS Mobile application
Emergency Opening Support	YES
Security Opening with Door Control	YES
Certifications	CE, FCC, ROHS

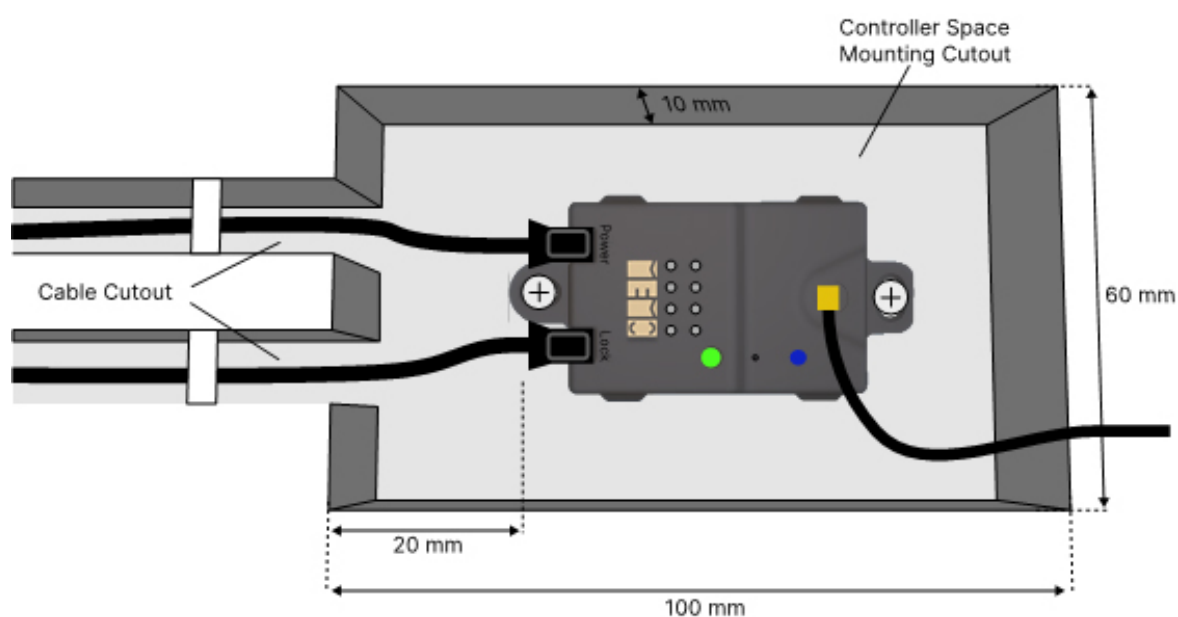
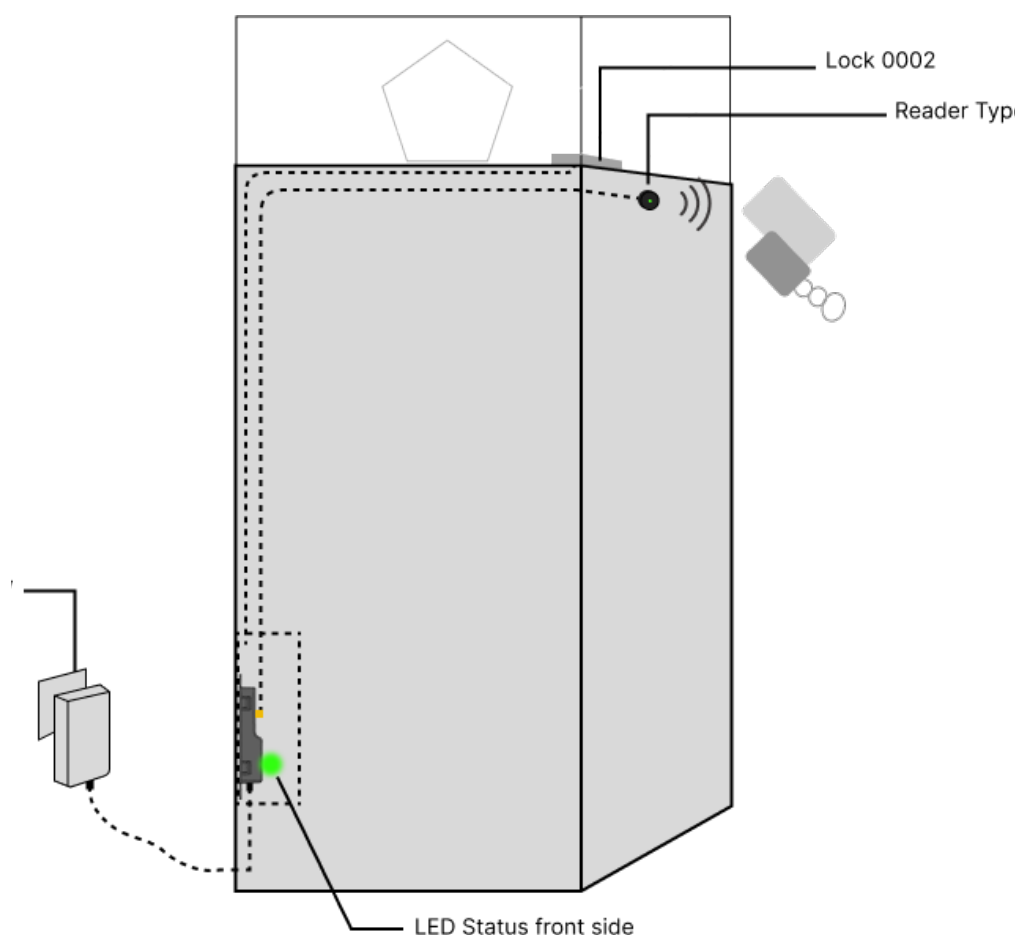
Air2Mini External Reader - Dimensions



Dimensions expressed in mm
Tolerance +0.5 mm

Air2Mini External Reader

Mounting Recommendations



Air2One PS 12 W

Power Supply 12 W AIR
AC Plug Type: Worldwide

Article Number: MI-PSY3-0012-12AIR



Technical Data

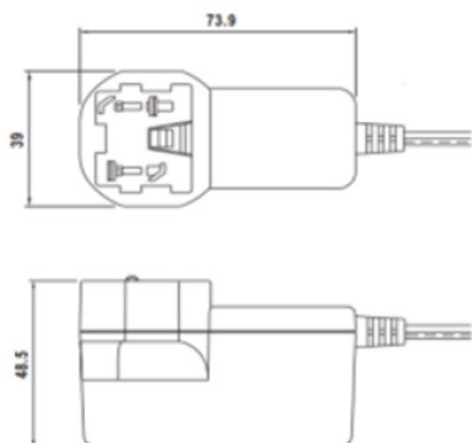
Dimensions (LxWxH)	73,9 x 39 x 48,5 (mm)
Cable Length	1,0 m 12 V DC Line / No Power Cord
Input Voltage	100 – 240 VAC, 50 – 60 Hz
Connector	4 pin Molex Nano - fit socket
Operating Voltage	12 V DC
Power	12 W
Current	1A
Power Loss at 40 °C	- 30 %
Temperature Range	-10 °C to 50 °C





Features

Overload / Overvoltage Protection	YES
Safety Isolation	YES
Worldwide Power Standards	YES
Certifications	TÜV/GS, EN/EC, CE, UL, FCC, CSA, CCC, AS/NZS, ROHS

Dimensions

(mm)



	
EUROPEAN TYPE	AMERICAN TYPE
	
AUSTRALIAN TYPE	BRITISH TYPE

Air2One Lock 0923

Electric Furniture Lock

Magnetic Door Sensor

Article Number: MI-MMV1-0923-AMAIR



This lock type combines compact design with high resistance against break in attempts. External magnetic door sensor, manipulation proofed, is included + latch 15 mm. A very compact lock for versatile mounting positions.

Technical Data

Compressive tensile strength	400 Kg*
Cable Length	3 m
Connector	6 pin Molex Nano-fit Socket
Bolt	Steel Bolt 8 mm
Operating Voltage	12 V DC
Locking Cycles	1 000 000
Current Consumption	420 mA
Power Supply requirement for 8 Locks	40 W
Temperature Range	0 °C to 50 °C
Dimensions (LxWxH)	90 x 52 x 25 (mm)
Door Latch Dimensions (LxWxH)	49.5 x 32 x 16 (mm)

Features

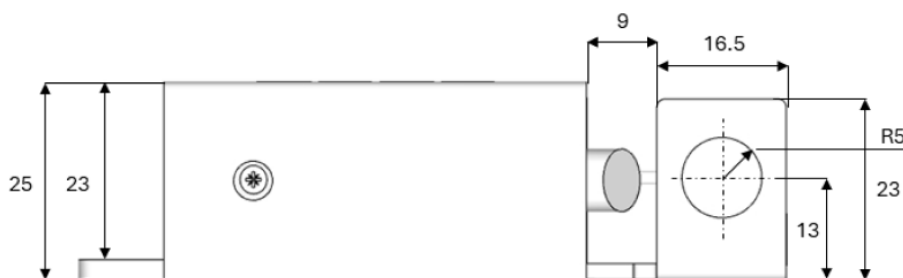
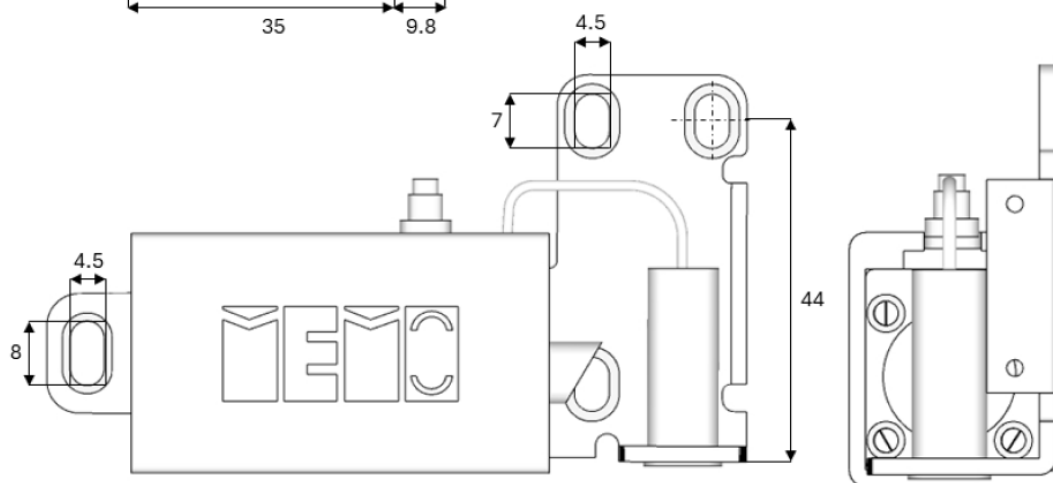
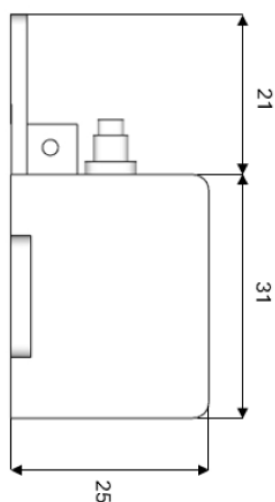
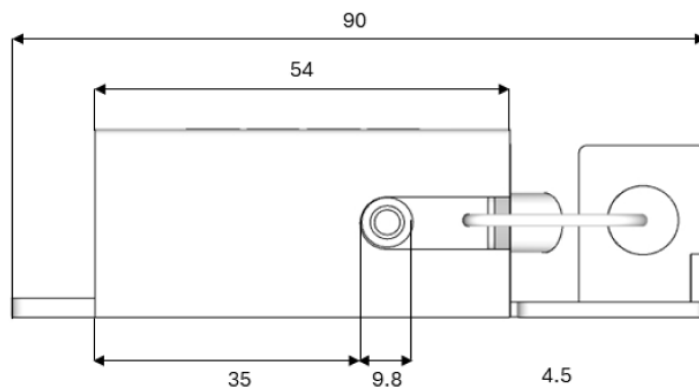
Door Open Sensor	YES (External Security Reed Sensor)
Push-to-Open Capability	YES
Auto-Eject	NO
Mechanical Emergency Opening	NO
Permanent ON Capability	YES

* Perfect mounting situation on high performance steel frames, mounting with steel bolts. For best security keep door gaps as small as possible, max. 3 mm recommended! Applicable on wooden furniture - strength of lock will be higher than that of the wood.

Locking function MUST be tested in a sample furniture before final production regarding manipulation security and tolerance for misalignment - to ensure safe and secure locking!

Lock Installation MUST be tested while assembly before the door/drawer is closed the first time - to avoid blocking access into a cabinet!

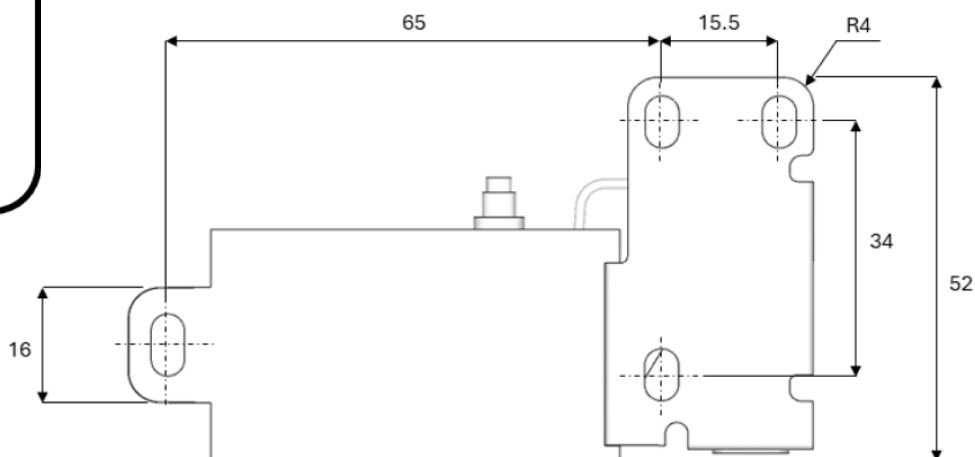
Air2One Lock 0923



SCAN ME !

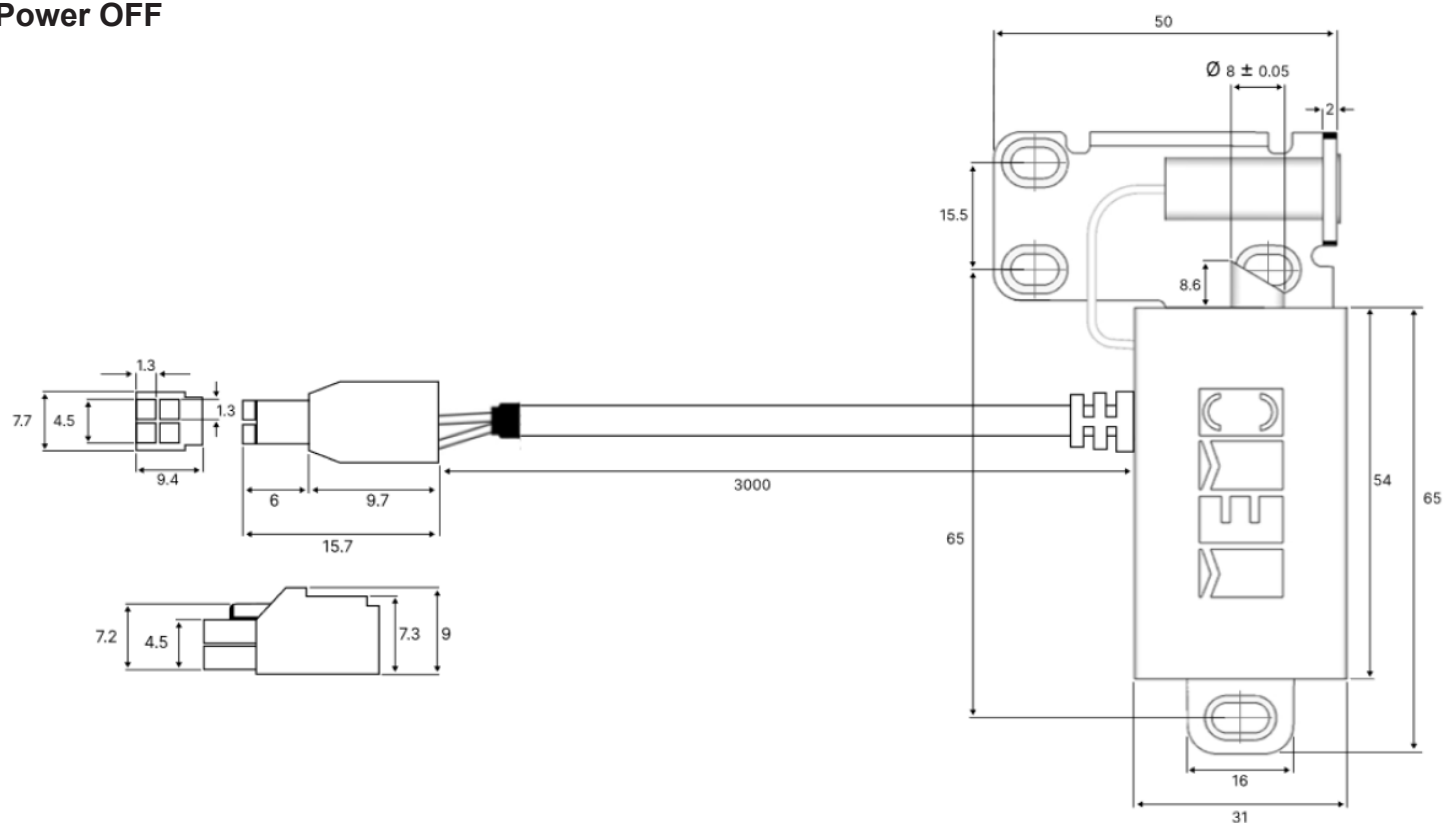


3D↓

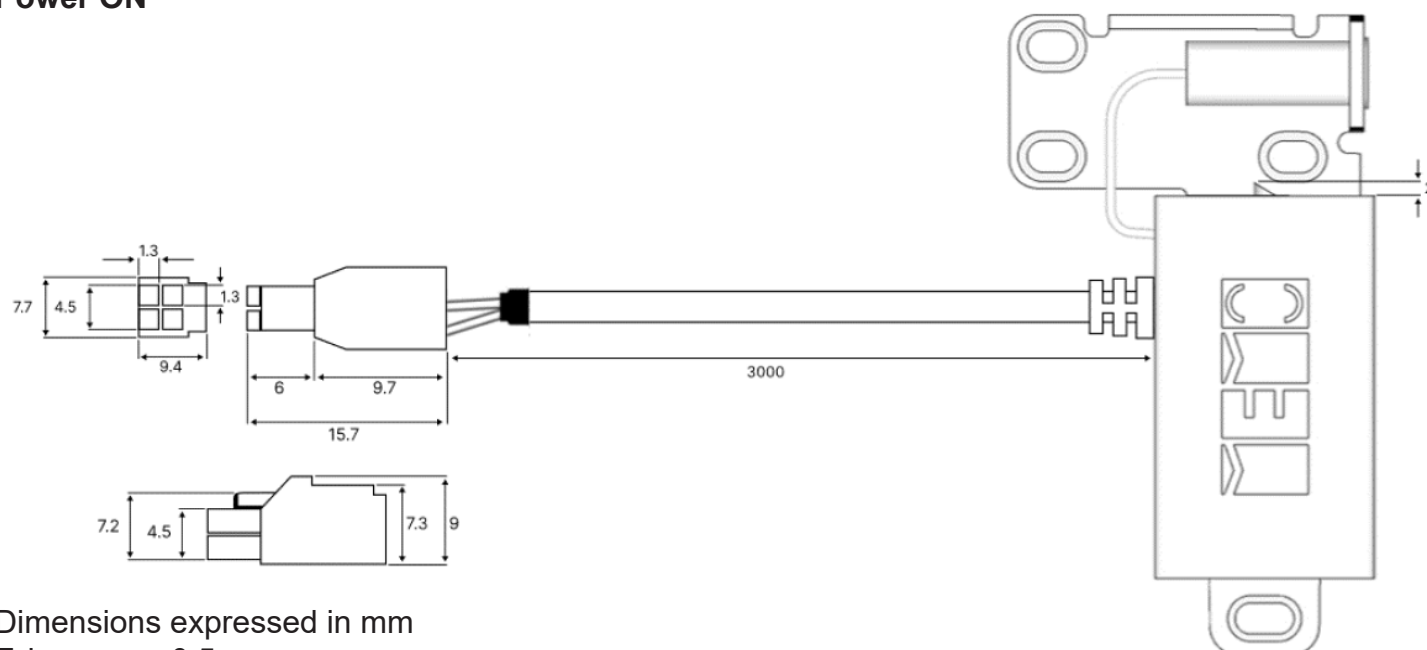


Air2One Lock 0923

Power OFF



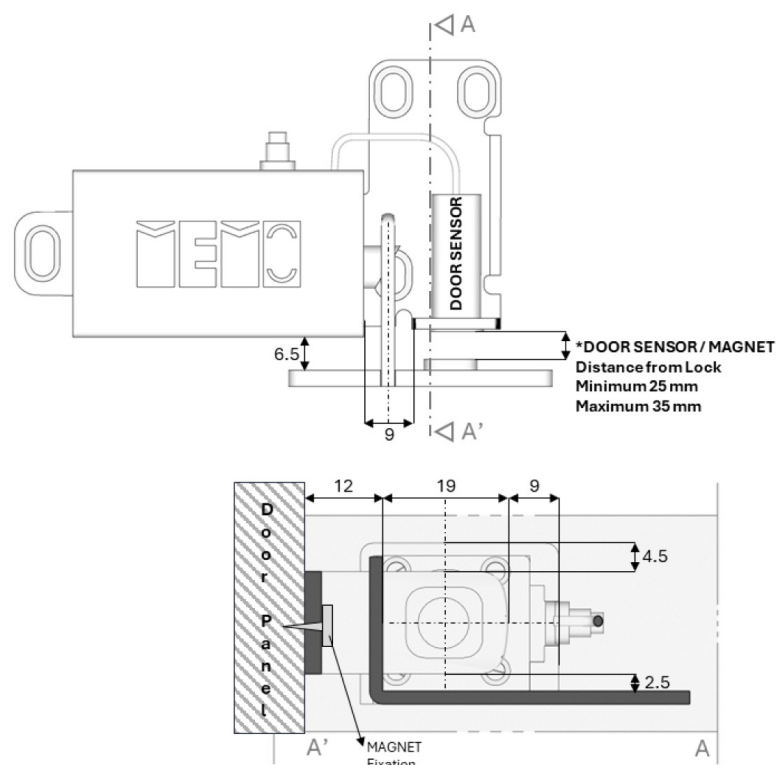
Power ON



Dimensions expressed in mm
Tolerance ± 0.5 mm

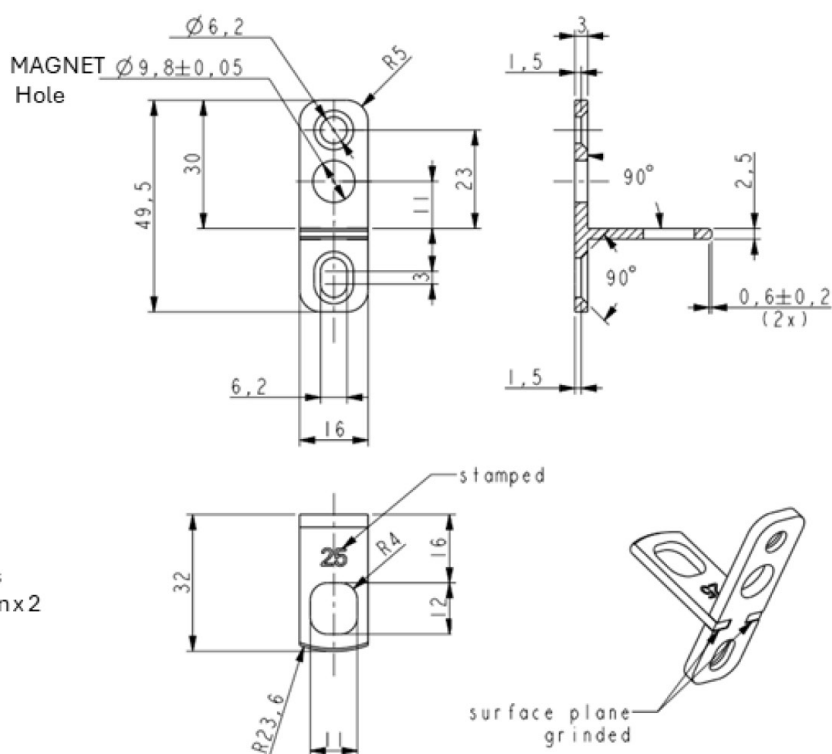
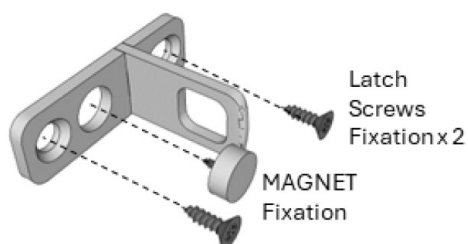
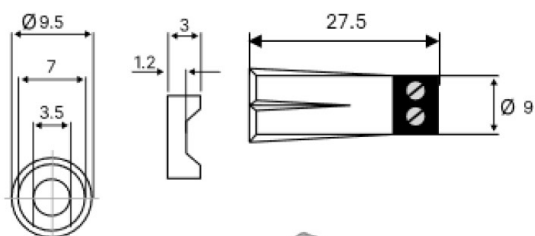
Air2One Lock 0923

Latch and Sensor



Latch Dimensions

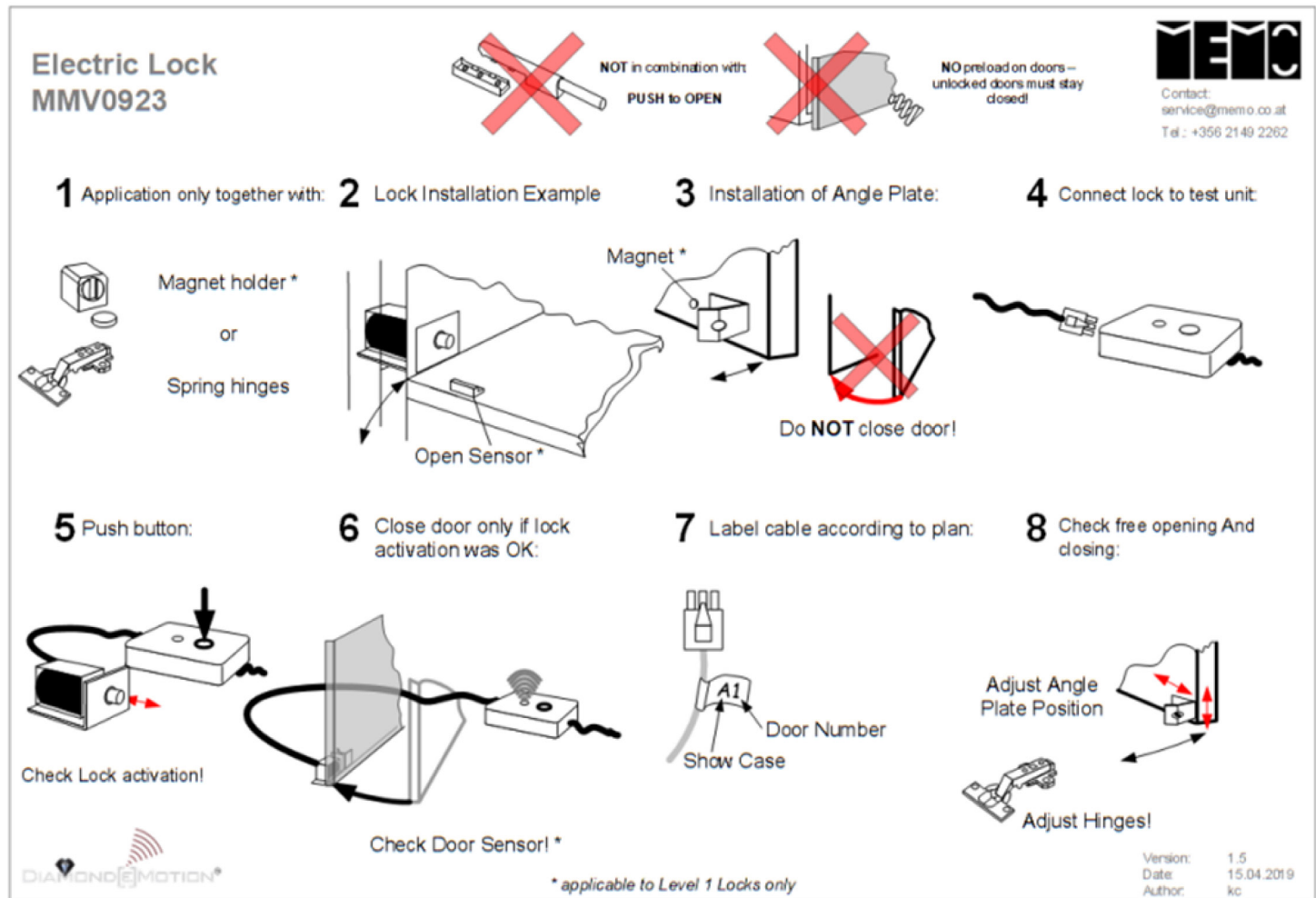
*DOOR SENSOR / MAGNET



Dimensions expressed in mm
Tolerance ± 0.5 mm

Air2One Lock 0923

Examples and Recommendations



ATTENTION !

FOLLOW THE INSTALLATION RECOMMENDATIONS CAREFULLY!
LOCK SHOULD BE INSTALLED IN SUCH A WAY THAT IT CAN BE DISMANTLED FROM THE OUTSIDE IN CASE OF DEFECT WHILE THE DOOR IS LOCKED. SO THAT ACCESS TO THE CABINET CAN BE MAINTAINED AT ALL TIMES.

Self-closing hinges and holding magnets **MUST** be used - NO opening tension on doors and drawers!

Preferred mounting position: horizontal!

Test lock function on a prototype before going into production!

Reader Type VII

Reader Type VII – ROUND LED – 3 m cable, AIR2-LINE

Article Number: MI-ANT7-0000-03AIR



Technical Data

Dimensions (LxWxH)	34,5 diam x 8,3 (mm)
Cable Length	3m
Connector	Coaxial MCX Male
Temperature Range	-10 °C to 50 °C
Protection Class	IP44

Functions

Operation through Wood, Plastic, Glass etc.	YES
Operation through any Metal or Mirror	NO
LED	YES

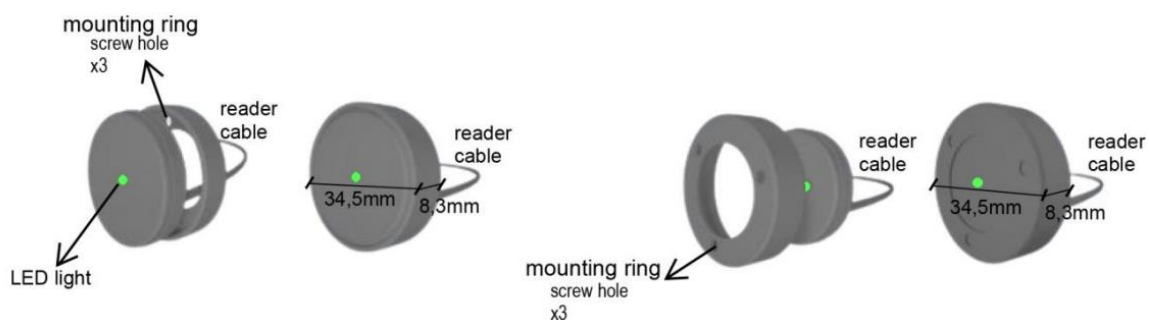
Reader Range

CHIP Key Card	4 cm (3cm using 2 Readers)- through the air*
CHIP Key Ring	3 cm (2 cm using 2 Readers)- through the air*

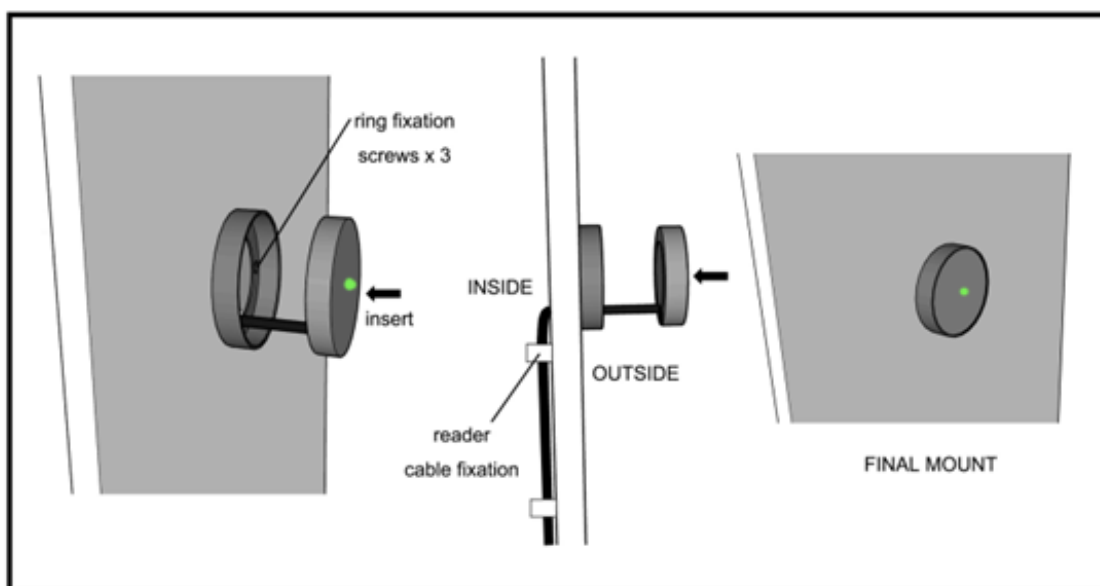
*Other materials between Reader and CHIP may reduce the reading range; field tests are mandatory.

Installation - Reader Type VII

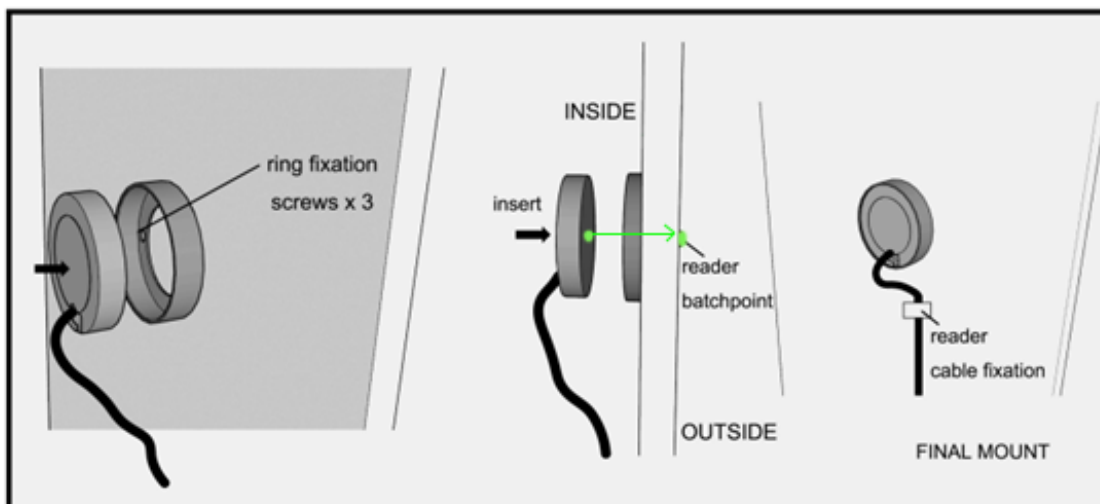
Dimensions



a. Outside the Panel

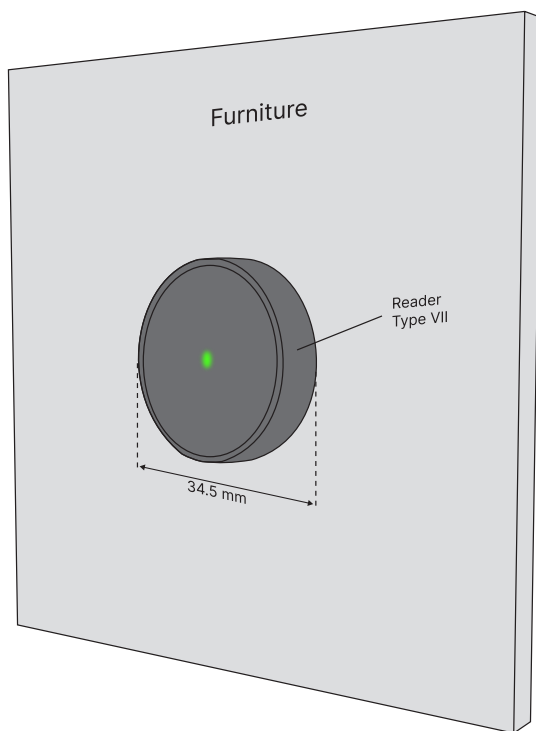


b. Inside the Panel

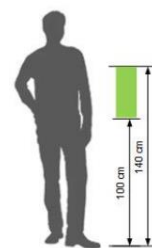
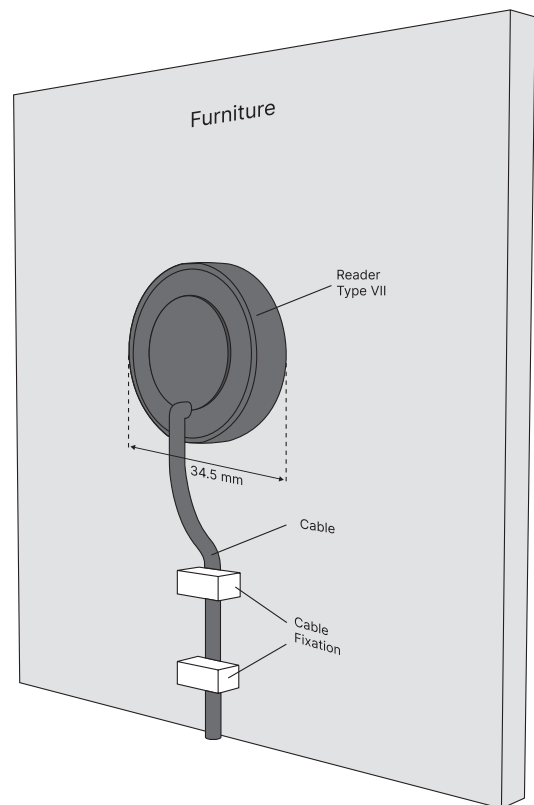


Mounting Recommendations - Reader Type VII

a. Outside the Panel



b. Inside the Panel



AIR2-LINE FAMILY

1. Lock Types

a) MOTOR LOCK - DOOR SENSOR



MI-MMV1-0002-12HSAIR



MI-MMV1-2002-12HSAIR

b) MAGNETIC LOCKS - DOOR SENSOR



MI-MMV1-0923-12AMAIR



MI-MMV1-1051AIR

c) OWD's



FLAT



ANGLED



VERTICAL



2. Power Supply



PSY3-0012-12AIR
Power Supply 12W



PSY5-0040-12AIR
Power Supply 40W

3. External Readers



MI-ANT3-0001-03AIR
Reader Type III



MI-ANT5-0001-03AIR
Reader Type V



MI-ANT7-0000-03AIR
Reader Type VII