



# MEMO AIR2-LINE CARPENTER INSTRUCTIONS SHORT FORM



## AIR2-LINE

### To prepare Show Cases in the Workshop:



1. Installation Guide Lines and Technical Documents for all MEMO products can be downloaded under [www.memolocks.com](http://www.memolocks.com).

It is very important to read and follow these guidelines for:

- Correct installation
- Security of the locking mechanisms
- Highest Reliability and longest Maintenance-Interval



2. Download of MEMO's mobile App is free on APPLE and GOOGLE stores.



3. Prepare 1 SYSTEM CARD with User-Guide Folder to program to all controllers.



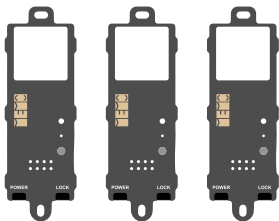
SYSTEM  
CARD



USER GUIDE  
FOLDER

**\*Not necessary when " KEY PROGRAMMING SERVICE" is ordered from MEMO.**

4. Prepare all Controllers and all ACCESS keys & SPECIAL KEYS for one project.



ACCESS  
KEYFOB



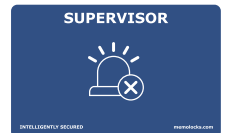
PROGRAM  
CARD



ERASE  
CARD



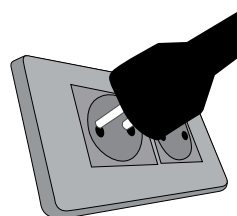
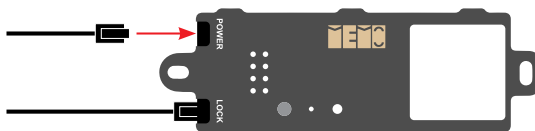
DECORATION  
CARD



SUPERVISOR  
CARD

**\*Not necessary when " KEY PROGRAMMING SERVICE" is ordered from MEMO.**

5. Connect first Controller to power.



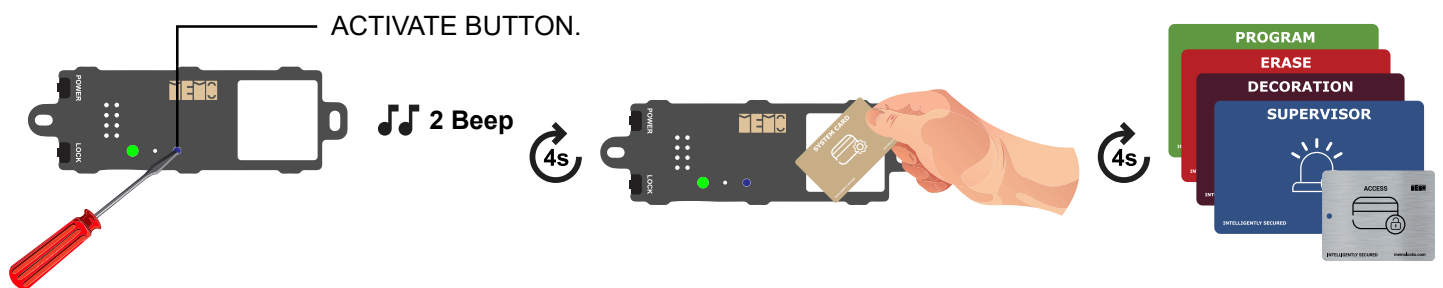
**\*Not necessary when " KEY PROGRAMMING SERVICE" is ordered from MEMO.**

## AIR2-LINE

### To prepare Show Cases in the Workshop:

#### 6. Program ACCESS & SPECIAL KEYS directly at the Controller:

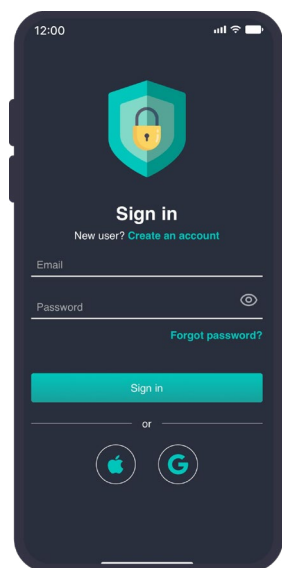
- Push the ACTIVATE button and present one key after the other.
- 4 seconds after last key presentation, controller returns in normal mode
- In case further keys must be programmed, start procedure with pressing the ACTIVATE button.



**\*Not necessary when “ KEY PROGRAMMING SERVICE” is ordered from MEMO.**

### In case an AIR2FOUR controller shall be configured for READER – LOCK assignment:

#### 7. Programming and Configuration of MEMO`s AIR2 controllers via mobile app require.



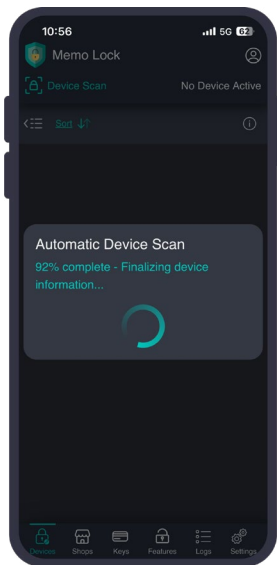
- To create your user account
- To log in with your user account
- The APP will automatically scan for controllers in proximity.

## AIR2-LINE

### To prepare Show Cases in the Workshop:

#### 8. Program ACCESS & SPECIAL KEYS directly at the Controller:

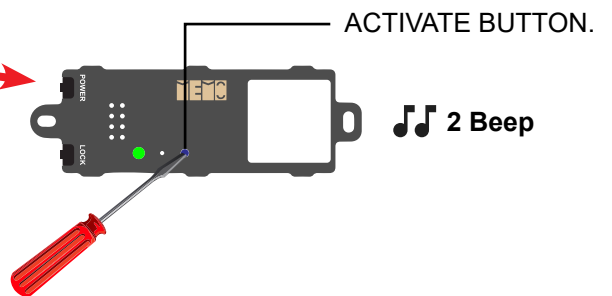
- To tap on one controller in the list to connect with
- Push ACTIVATION Button to authorize yourself on that controller for remote connection



Scan device.

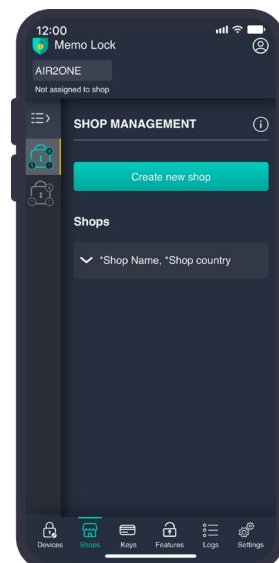
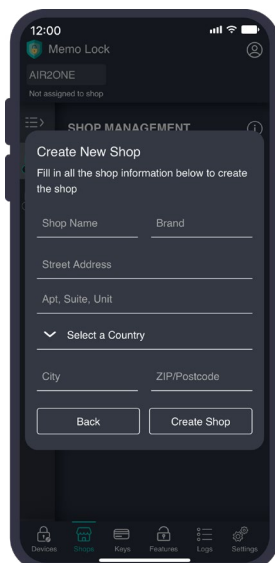
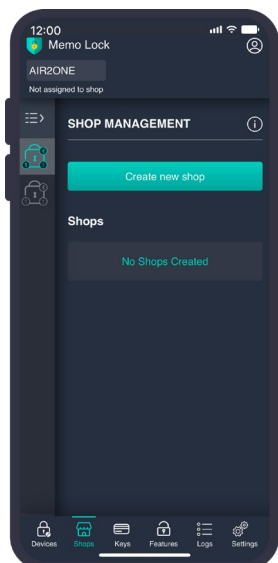


Activate device.



#### 9. Fill in all fields of the shop details where the controller(s) will operate.

This info is mandatory for management and maintenance the whole system in future.



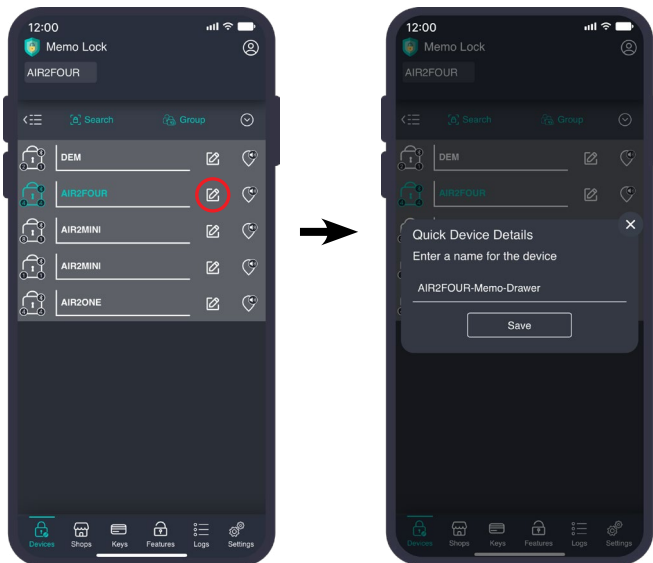
Go to 'Shops' and press 'Create New Shop' using shop information.

Shop created.

## AIR2-LINE

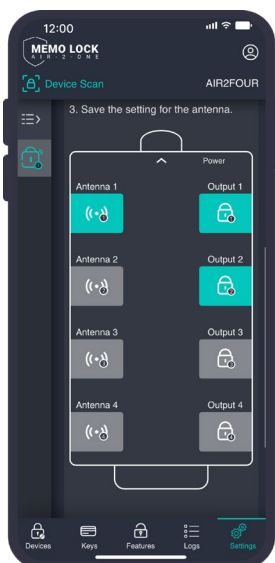
### To prepare Show Cases in the Workshop:

#### 10. Name the controllers according to the brand and showcase (ALL controller types).



Enter a specific Name for the controller that is significant for the area in the shop and specific for the showcase. This info is required to manage individual settings for controllers in the shop.

#### 11. In case this is an AIR2FOUR controller, assign the reader(s) to the lock(s).

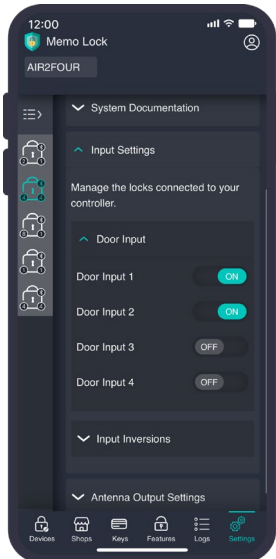


AIR2FOUR controllers are fully flexible in Reader & Lock configuration. Tap on "Reader Symbol" where you connect the reader and it will turn to green. Then tap on the lock symbol(s) and it/they will turn green also – then this (green) reader will switch the (green) assigned locks.

## AIR2-LINE

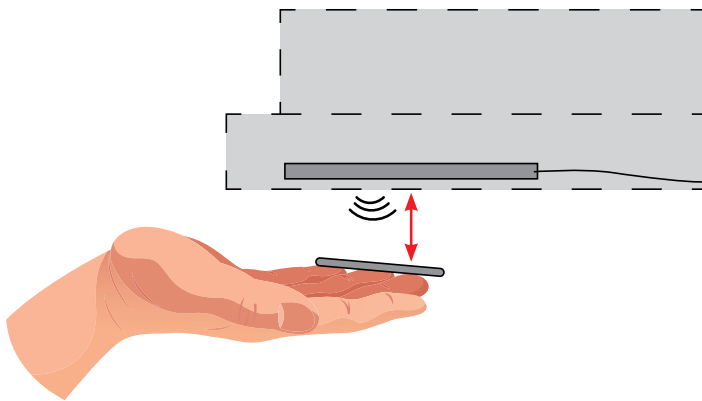
### To prepare Show Cases in the Workshop:

#### 12. In case this is an AIR2FOUR controller, De-activate unused Inputs.



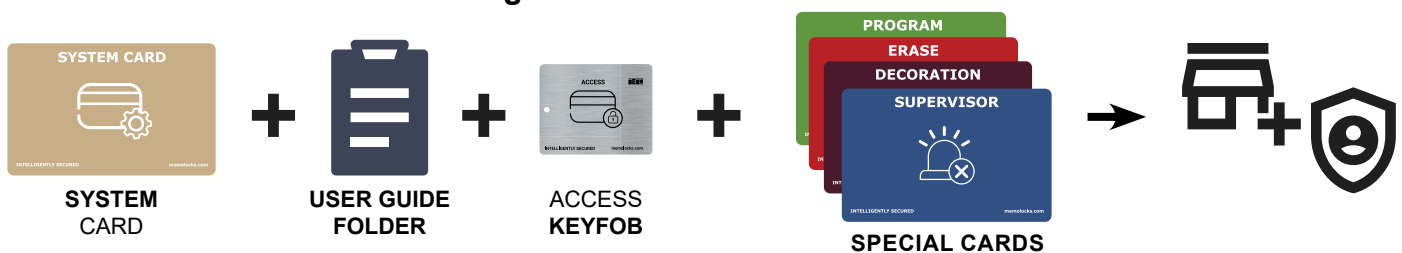
In case you connect less than 4 locks to an AIR2FOUR controller, go to the input menu and de-activate the inputs which are NOT connected to a lock.

#### 13. Use an ACCESS KEY AND CARD to check the reading range when reader is finally installed in the show case.

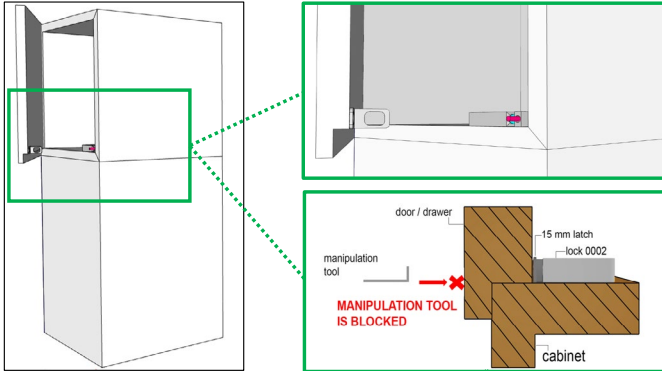


Bring the KEY close to the batch point in a slow move and listen to the beep sound, when the key is accepted. Distance between Key and panel surface shall be min. 15mm.

#### 14. Deliver SYSTEM CARD in the User-Guide-FOLDER + ACCESS KEYS + SPECIAL CARDS to the SHOP and handover to Management.



**15. Test the lock adjustment (Check that the locks are properly aligned and operate smoothly with proper freeplay).**



Testing the lock / latch adjustment is **VERY IMPORTANT** for maintenance & trouble free operation.

Make sure the lock bolt goes into the latch in **CENTER POSITION**.

A basic test is to check the **FREE PLAY** in locked position, it must be 2mm min.

**! IMPORTANT:**

**Repeat this procedure for ALL controllers of this shop consignment.**

**Mandatory Follow-Up – Video Call After Installation.**

Once the system has been installed into the furnitures, please contact us to schedule a short video call.

@ [memosupport@memo.co.at](mailto:memosupport@memo.co.at)

+356 794 87568